



PO Box 112, Middle Falls, NY, 12848

Ph: 518-692-2000 Fax: 518-692-7554

Email: info @battenkillequine.com

Kurt Lutgens, DVM

Christina Hill, DVM

Sarah Begley, DVM

Fall Vaccine Special

It's time to think about protecting your horse from the challenges of infectious agents with fall vaccinations. At this time we recommend:

**Influenza/
Rhinopneumonitis
Potomac Horse
Fever
Intranasal
Strangles**

This series of vaccines will be offered at a reduced price for horses receiving the entire package. For larger facilities, there will be a minimum call charge per horse. This special price will only be available through November 15th, so call the office soon at **518-692-2000** to schedule your horse's appointment.

Weanlings

We recommend beginning vaccination of weanlings from vaccinated mares at 5-6 months. The initial round of vaccines takes four visits to complete as all immunizations will require a booster.

Broodmares

Broodmares should be confirmed as to their pregnancy status and vaccinated for **Rhinopneumonitis** at 3, 5, 7, and 9 months of pregnancy. Pre-foaling vaccines should be given one month prior to the mare's due date.

Horses Traveling South

For those horses traveling south to warmer climates this winter, we recommend boosters of **West Nile**

Virus, EEE, and **WEE** vaccines as your horse's exposure to mosquitoes will be extended. Also remember to check that your horse's negative Coggins is current and call for a health certificate to your destination at least 2 weeks in advance of your scheduled departure date.

It is very important to booster encephalitis vaccines (WNV, WEE, EEE) if your horse will be traveling south this winter. See back of page for more information.



Eastern Equine Encephalitis (EEE)

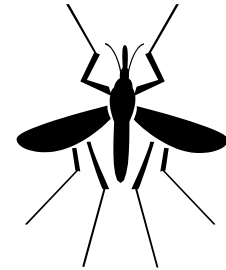
Recent cases of Eastern Equine Encephalitis (EEE), predominantly in the southeast but reported as far north as Maine, may have heightened your awareness and prompted questions about the disease. EEE is spread by mosquitoes. A horse with EEE acquired it through the bite of an infected mosquito, and that infected mosquito acquired it from feeding on an infected bird. Horses are considered a “dead-end host” for the virus; that is, once they are infected they do not circulate enough of the virus to re-infect a mosquito. So a horse will not pass the disease to another horse, but the presence of an infected horse indicates the presence of infected mosquitoes, and therefore

a locally higher risk of infection.

Cases of the disease in horses come on quickly and are almost always fatal. An affected horse will be unsteady, exhibit erratic behavior, and have a notable loss of coordination. No effective treatment for EEE in horses exists. The horse will ultimately begin to have seizures, usually within 48-72 hours of the appearance of the first symptom, and the seizures will result in death.

The only way to protect a horse from EEE infection is with a professionally administered vaccination. The doctors at Battenkill Veterinary Equine recommend annual vaccination against EEE and the protection is

included in our spring vaccine package. If your horse received the recommended annual vaccination, no further action is necessary. If your horse remains unvaccinated against EEE it is advisable to vaccinate them at this time. If your horse will be traveling to the southern states this fall or winter it is *highly recommended* that even horses who have been previously inoculated receive a booster vaccine. Please contact us if you have any further questions.



Fall Considerations

Teeth: Regular dental care is an important part of your horse's health maintenance. The winter months can be difficult for all equines, particularly older ones. Horses may face challenges in maintaining/gaining weight as much of the energy that they consume will be used to keep warm. It is important to give them the best chance at getting the most benefit from their feed by providing regular dental care. In the winter horses generally consume more hay and grains than grass. A horse whose teeth are in good shape will have an easier time managing that diet. Please contact the office to schedule an appointment to address your horse's dental health.

Worming: Those horses receiving a Pyrantel daily dewormer (such as Strongid C® or Continuex®) require a biannual dosing of Ivermectin, once in the spring and once in the fall. We recommend Equimax®; it has the broadest spectrum of activity against the parasites we commonly see. As well as being effective against Bots, Round Worms, Pin Worms, and all stages of Strongyles, Equimax is effective in removing tapeworms. We also recommend a fecal examination once a year to monitor how your deworming program is working.

Currently enrolled PreventiCare clients, and those interested in enrollment:

Please be advised to changes in the PreventiCare program. Owners are now responsible for the enrollment and re-enrollment of their own horses and PreventiCare has instituted an annual enrollment fee of \$50. This is payable directly by the client through the PreventiCare website.

If you are a current client, you have been mailed a packet by Pfizer informing you of these changes and providing you with a unique username and password with which you can log on to the PreventiCare website.

We're on The Web!

www.battenkillequine.com

Phone: 518-692-2000

